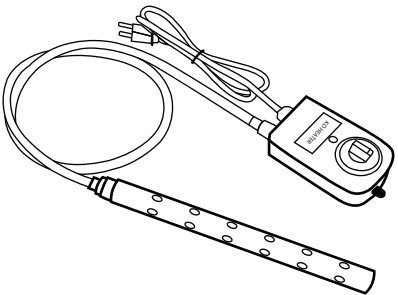


Pong-Dang Heater®

Fully Submersible Portable Electric Immersion Water Heater

User Manual



NORTH AMERICA

KD-PD-AS13K, KD-PD-AJS13K, KD-PD-AT13K, KD-PD-AJT13K

EUROPE

KD-PD-EJF10K, KD-PD-EJF20K, KD-PD-ETF10K, KD-PD-ETF20K  
KD-PD-ESDF10K, KD-PD-ESDF20K, KD-PD-ESTF10K, KD-PD-ESTF20K

ENGLAND

KD-PD-EJG10K, KD-PD-EJG20K, KD-PD-ETG10K, KD-PD-ETGF20K  
KD-PD-ESDG10K, KD-PD-ESDG20K, KD-PD-ESTG10K, KD-PD-ESTG20K

Heater Specialized Company

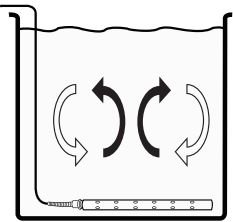
KD Heater Co., Ltd.

6-2, 722-7, Hwapap-ro, Eunhyeon-myeon, Yangju-si, Gyeonggi-do, Republic of Korea

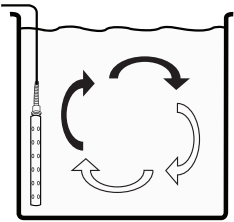
Tel. +82-31-864-8416 Fax. +82-31-864-8418

infokdheater@kdheater.co.kr www.kdheater.co.kr

## 5. How to use in liquid



Placing the heater horizontally at the bottom of the tank is highly recommended.

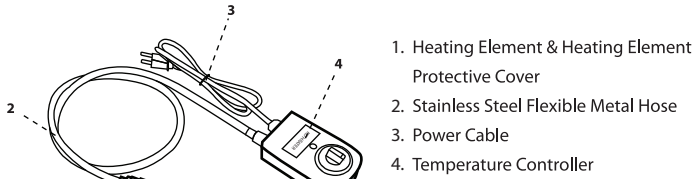


Placing the heater vertically makes the reading less accurate due to the temperature sensor mounted at the upper part of the inside of the heating element.

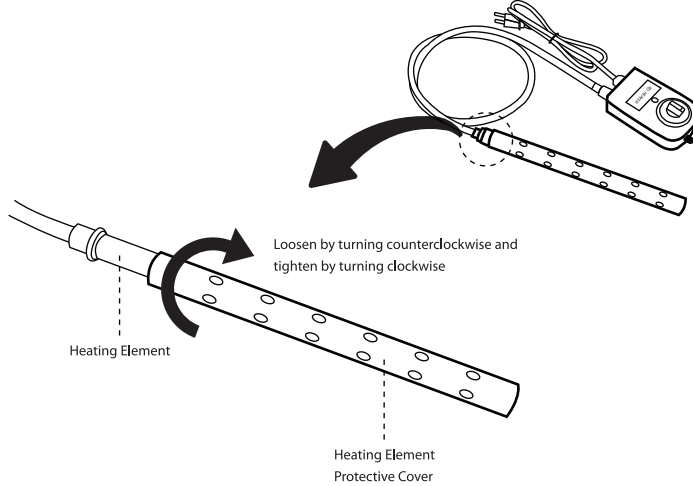
## 6. Operation

- If necessary, fix the thermostat to a wall, pillar, etc. with screws or use it freely.
  - Do not mount the heater in hazardous atmospheres containing combustible or flammable gases, vapors or dusts.
- Make sure that the container is filled with a liquid to be heated before operating the heater.
- Completely immerse the heater in the liquid before turning power on.
- Set the desired temperature by turning the temperature setting dial and supply the power to the heater.
  - The heater must always be completely submersed in the liquid during its operation.**
  - Check your AC supply voltage corresponds with the voltage indicated on the heater.
  - Never turn power on when the heater is directly exposed to open air.**
  - Leaving the heater in water unattended for a long time can cause liquid losses due to evaporation, leading to the heater failure or damage beyond repair by exposure to the air.
- To avoid burns
  - Do not touch the heating element with bare hands during the course of an operation
  - Wait until the heating element has completely cooled down because the heating element is still hot even through the heater is turned off.

## 1. Part Names



## 2. Heating Element & Heating Element Protective Cover



## 7. Maintenance

- Disconnect all electrical power to the heater prior to any inspection or cleaning.
- Periodically descale the heating element to increase the life and effectiveness of the heater.
- All scopes must be visually inspected after each use and manual cleaning.

### Safety Precautions

Before using the product, make sure you read all the safety precautions.



- Always ground the product to avoid electric shock.
- Do not touch the plug with wet hands while power is being supplied. Doing so may occasionally result in minor injury due to electric shock.



- Its main plug should only be inserted into power outlets that are properly grounded.
- Do not use the product where subject to flammable or explosive gas. Otherwise, minor injury from explosion may occasionally occur.
- Do not use the product where it may be exposed to smoke, corrosive, gases or excessive dust.
- Never disassemble, modify or touch any of the internal parts. Minor electric shock, fire or malfunction may occasionally occur.
- To avoid damage to the facilities or the product itself due to a fault of the product, safety countermeasures must be taken before usage, such as proper installation and the overheating protection device.

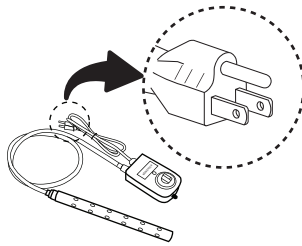


- Use the product within the rated load and power supply.
- Use the product within the rated temperature ranges.
- Immediately replace power plug, power cord or extension cord, if damaged.
- An extension cord used should be a three-core cabtyre cable having an earth wire.
- Use a thick and durable cord for outdoor use.
- Unplug the product when it will not be used for extended periods.
- All electrical work must be performed by a qualified technician according to local regulations.

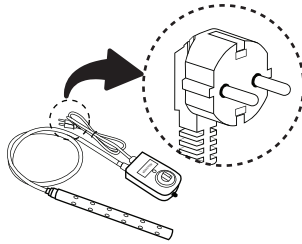
## 3. Heater with thermostat & without thermostat

### Heater with thermostat

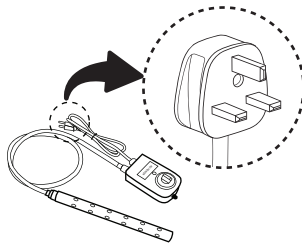
North America



Europe

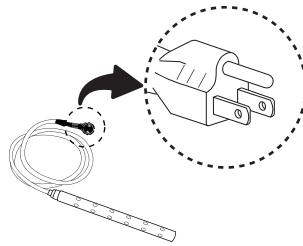


UK

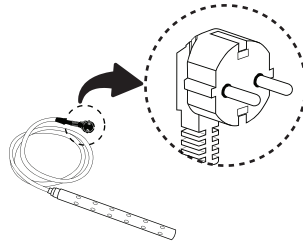


### Heater without thermostat

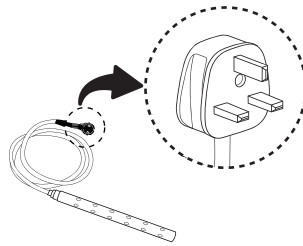
North America



Europe



UK



### Pong-Dang Heater® Fully Submersible Portable Electric Immersion Water Heater

Designed to provide with a long-lived, dependable and trouble-free heater for the heating of plain water, salt water, solutions, chemicals and more by completely immersing the heater in a liquid.

### Safety Features

Should excessive water temperature occur, the auto-overheat safety cutoff will automatically turn off the power supply to prevent from overheating. When the actual temperature is lower than the set temperature, the heater will automatically turn on to heat the medium

### Product Features

- Completely submersible in a liquid
- Effectively and conveniently heat liquid
- Excellent durability and outstanding performance
- Automatic thermostat and overheating protection
- Providing a high degree of efficiency as the heat that is generated is quickly dissipated directly into the liquid
- Ideal for using in farm houses, cattle farms, construction sites, factories, industrial sites, military units, restaurants, outdoor events, and more places requiring hot liquids.
- Applications where freeze protection or temperature maintenance is required.
- Easy and convenient to use

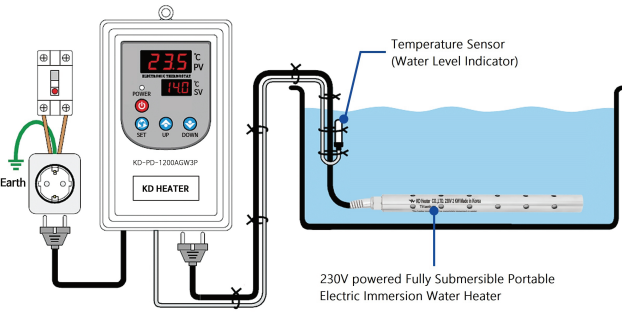
### Application Selections

Heating Element Material	Heating Substances
Stainless Steel	Plain(tap) Water
Titanium	Plain Water, Salt Water, Underground Water, Solutions, Chemicals

Plug Type	Used in
B	North America
F	Almost all of Eorupe
G	UK, Ireland and more

## 4. Digital Thermostat (KD-PD-1200AGW3P)

Specifically designed for use with a 1000W / 2000W 230V powered fully submersible portable electric immersion water heater which has no temperature control in its specification.



For more information about the digital thermostat, please see back page.

### Specifications

Characteristics	EU	NA
Heating Power	1000W 2000W	1300W
Rating	230V 11A	120V 10A
Heating Element	Stainless Steel / Titanium	
Heating Element Protective Cover Material	Stainless Steel	
Temperature Range	0℃ ~ 110℃ (32℉ ~ 230℉)	
Digital Thermostat (Option-Sold Separately)	- 40℃ ~ 99℃	
Heating Element Dimensions	350mm(L) x 24.5mm(D)	
Heating Element Protective Cover Dimensions	355mm(L) x 31.6mm(D)	
Stainless Flexible Metal Hose Length	1.5 Meter	
Power Cable Length	1.5 Meter	

- Please note that cosmetic flaws or blemishes do not affect the functionality or performance.
- The information and specifications contained in this User Manual are subject to change without notice.
- Please visit our website [www.kdheater.co.kr](http://www.kdheater.co.kr) to download the manual.